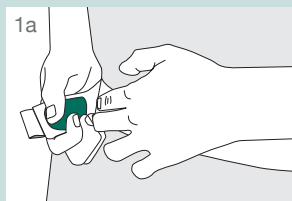


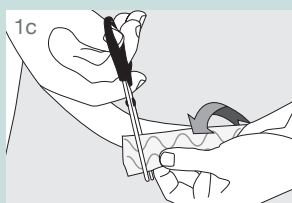
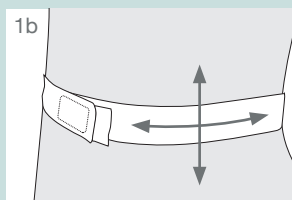
NephSys – the nephrostomy bag and belt system

Instructions for use

1. Applying and shortening the waist belt

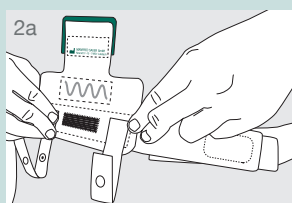


Place the side of the waist belt with the silicone lines on the skin (Fig. 1a) and put the belt on anywhere between the waist and the hips under slight tension (Fig. 1b). Ensure a comfortable but, most importantly, a stable fit.

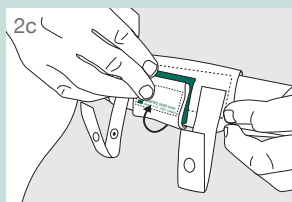
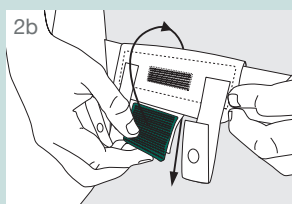


The excess length of the belt can be cut off with scissors (Fig. 1c).

2. Positioning and fixing the hook-and-loop pad



Attach the hook-and-loop pad to the waist belt, ensure the position of the pad is in a convenient position for connecting to the catheter/emptying the nephrostomy system and is comfortable (tube isn't pulling) as in illustration (Fig. 2a), this would normally be between the navel and hip or above the hip on the side where the drainage system is located.



After attaching the hook-and-loop pad (Fig. 2a) guide the green top tab around the belt (Fig. 2b) and then secure the hook-and-loop fixation strip (Fig. 2c).

For more information or samples, simply contact our helpline:

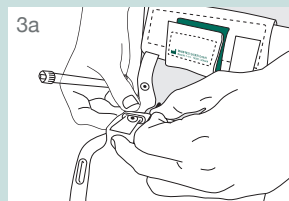


Tel: **01604 595 696**



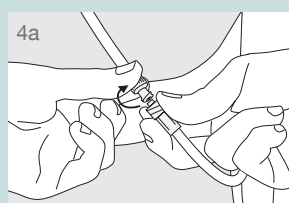
Email: helpline@manfred-sauer.co.uk

3. Attaching the bag to the hook-and-loop pad



We recommend holding the inlet tube with one hand to prevent contact with the connecting area of the adapter. Attach the NephSys bag so that the outlet tap is facing forward. Thread the two retaining straps through the loops positioned at the top of the bag and fasten using the press studs (Fig. 3a).

4. Connecting the bag to the catheter

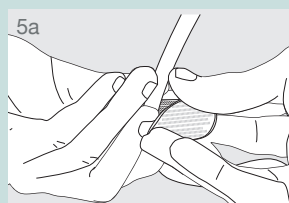


A luer lock connection consists of a male and female connector coming together and locking. Connect the male luer lock connector on the bags to the female luer lock connector on the nephrostomy catheter/tube, place together and turn clockwise to lock the connection (Fig. 4a).

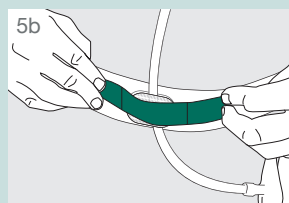
Do not tighten the luer lock too much as this can cause the connection to crack.

Ensure that the guide strings are not caught in the thread when locking the two ends together, as this can cause leakage. Connect the adapter of the bag to the catheter without tension.

5. Securing the inlet tube



To reduce the risk of twisting or pulling on the inlet tube or putting strain on or dislodging the nephrostomy catheter/tube, the inlet tube is secured to the waist belt to prevent this from occurring.



Remove the protective films from the middle of the adhesive fixation tabs. Guide the inlet tube between the two adhesive surfaces and stick the two adhesive surfaces together with the inlet tube in the middle (Fig. 5a). Attach the tab to the belt where the inlet tube naturally crosses the waist belt using the hook-and-loop fixation strip (Fig. 5b).



MANFRED SAUER UK